

FREEHOLD



House - Detached (EPC Rating: E)

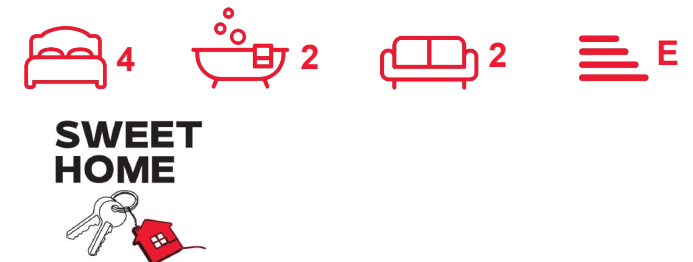
8 GLENVIEW, LARKHALL, ML9 1DA

Offers over

£359,995

FEATURES

- Spacious 4 bedroom detached house
- Master Bedroom with en-suite
- Driveway, Garage
- Close to local amenities
- Elegant sandstone exterior
- Conservatory
- Located in Glenview, Larkhall
- Easy access to transport links



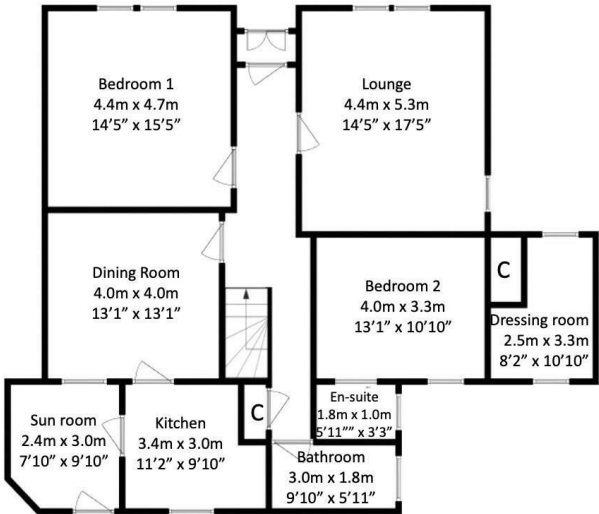
4 Bedroom House - Detached located in Larkhall

Caroline Morrison of Sweet Home Scotland, is proud to bring to the market, this impressive detached Sweet Home in the charming area of Glenview, Larkhall, The property offers a perfect blend of space, comfort, and modern living. With five well-proportioned bedrooms and two bathrooms, this property is ideal for families seeking a welcoming home.

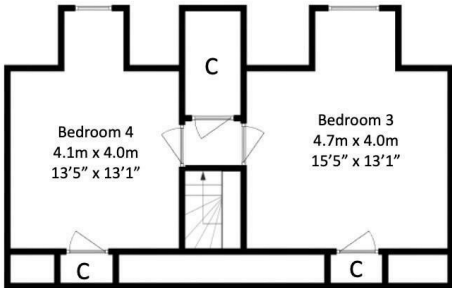
Upon entering, you are greeted by a spacious entrance vestibule that leads into a hallway, setting the tone for the rest of the house. The living room is a delightful space, perfect for relaxation or entertaining guests, while the dining room provides an inviting area for family meals. The kitchen is well-equipped, making it a joy for any home cook.

The ground floor also features a generous bedroom with an en-suite shower room and a dressing room, offering a private retreat. Additionally, there is a family bathroom conveniently located for the other bedrooms. A lovely conservatory extends the living space, allowing for an abundance of natural light and a seamless connection to the outdoors.

On the first floor, you will find two more bedrooms, providing ample space for family or guests. The property boasts a detached sandstone exterior, adding to its character and charm. The driveway and garage offer practical solutions for parking and storage.



Ground Floor



First Floor

Call us on

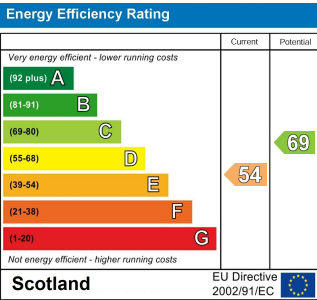
07717504350

sales@sweet-home.co.uk

<https://sweet-home.co.uk/>

Council Tax Band

E



Agents Note: Whilst every care has been taken to prepare these particulars, they are for guidance purposes only. All measurements are approximate and are for general guidance purposes only and whilst every care has been taken to ensure their accuracy, they should not be relied upon and potential buyers are advised to recheck the measurements.

